



Network Video Recorder Quick Start Guide

Performance Series NVR-PF10

Version 3.0
2021.08



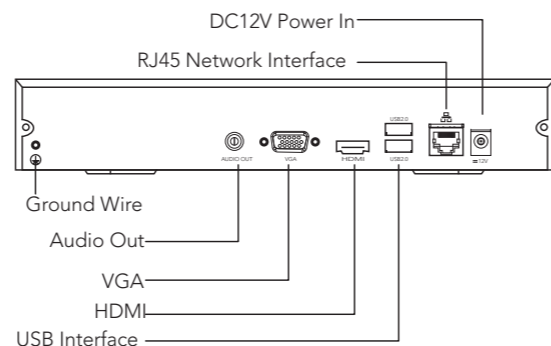
FCC Verification (U.S.A)

The device has been tested and complies with limits set by Part 15 of Federal Communication Commission (Class B).

The operation of the device is thus limited by the following two conditions:
1) it is not permitted to cause harmful interference to any authorized radio communications, and 2) it must accept any interference it receives.

1.Appearance and Specification

1.1 Rear Panel



INTERFACE	DESCRIPTION
AUDIO OUT	Connects to an audio output device.
VGA	Connects to a VGA display device.
HDMI	Connect to a HDMI display device.
USB	USB 2.0 Ports that can connect to a mouse for control and to USB drives for backup.
ETHERNET	10M/100M self-adaptive Ethernet port. Connects to router or other network adapters.
DC12V	Connects to the DC12V power adapter to turn on the NVR.

-01-

1.2 Specification

Model	SN10	
Encode	DSP	Hi-3536D
	Video Format	H.265 / H.264
	Decode	1 x 5MP@30fps, 1x 4MP@30fps, 1 x 3MP@30fps, 2 x 1080p@30fps, 4x 720p@30fps, 10x D1@30fps
Video Input	Audio Format	G.711
	IP Video Input	10 -CH
	IPC Input	Up to 10-CH 5MP, 4MP, 3MP, 2MP H.265 / H.264
Video Output	Incoming Bandwidth	30Mbps
	HDMI Output	1-CH HDMI resolution: 1024x768/60HZ, 1280x720/60HZ, 1280x1024/60HZ, 1600x1200/60HZ, 1920x1080/50HZ, 1920x1080/60HZ (Default 1280x1024/60HZ)
	VGA Output	1-CH VGA resolution: 1024x768/60HZ, 1280x720/60HZ, 1280x1024/60HZ, 1600x1200/60HZ, 1920x1080/50HZ, 1920x1080/60HZ (Default 1280x1024/60HZ)
	Video Output Interface	HDMI/VGA simultaneous output
	Audio Output	1-CH
	Multi-screen Display	1/4/6/8/9/10/16
	Outcoming Bandwidth	20 Mbps
	Live view/Playback resolution	5MP/4MP/3MP/1080P/960P/720P/660H/D1/2CIF/CIF/QCIF
	Recording Resolution	5MP/4MP/3MP/1080P/960P/720P/660H/D1/2CIF/CIF/QCIF
	Max Recording Channel	10
Encoding/Decoding Parameters	Frame rate	Main stream: 1CH 5MP@30fps/1CH 4MP@30fps 1CH 3MP@30fps/2CH 2MP@30fps Third Stream: 4CH Synchronous Playback Only support WeLanc IP cameras and 3rd party ONVIF IP cameras that support 3rd stream
	Multi-screen Playback	1/4
Remote View Parameter	Playback Search	Instant Playback, Regular Playback, Event Playback, Bookmark Playback, External File Playback
	Playback Mode	Frame by Frame, Rewind, 16 x Fast Forward, 1/8 x Slow Forward, 30s Forward/Backward Play
	Backup Mode	USB Backup, Network Backup
	Synchronous Preview Channel	Up to 10-CH (Main stream)
Hard disk	Synchronous Playback Channel/Up	Up to 4-CH (Main stream)
	SATA	1 x SATA interface
External Interface	Capacity	Up to 500GB/1TB/2TB/3TB/4TB/5TB/6TB/8TB/10TB capacity for each HDD
	Network Interface	1 x RJ45 10M/100M self-adaptive Ethernet interface
General	USB Interface	2 x USB 2.0
	Power Supply	12V DC, 9-16V DC input
	Consumption	≤8W (without hard disk or DVD-R/W)
	Working Temperature	-10°C ~ +55°C
	Working Humidity	10% ~ 90% (No condensation)
	Weight	≤1Kg (without hard disk or DVD-R/W)
Dimensions	44mm (H) x 240mm (D) x 260mm (W) 1U	

2.Installation

- To install the hard drive, please first remove the screws on both sides of the network video recorder.
- Remove the two screws on the back panel.

-02-



- Slide to open the upper case of the network video recorder.
- Put the 3.5 inch hard drive in. The back of the hard drive has 4 screw holes that you can align to match the holes from the bottom case of the NVR. Then secure the hard drive by installing the 4 screws on the back.
- Insert the SATA and power cable into the connectors on the HDD.



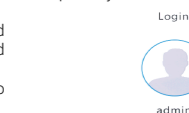
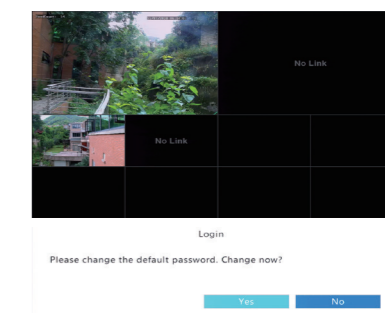
3.Setup and Add IP Cameras

3.1.Initial Setup and Auto-Add

After the NVR is powered up, all devices on the LAN network with ONVIF profile will be added to the NVR automatically. However, ONVIF cameras with pre-configured password require that you input the password manually.

A login page will pop out after you click to open any menu.

WeLanc IP cameras with default password will also be added automatically.



Enter the default username **admin** password **123456**, click Login.

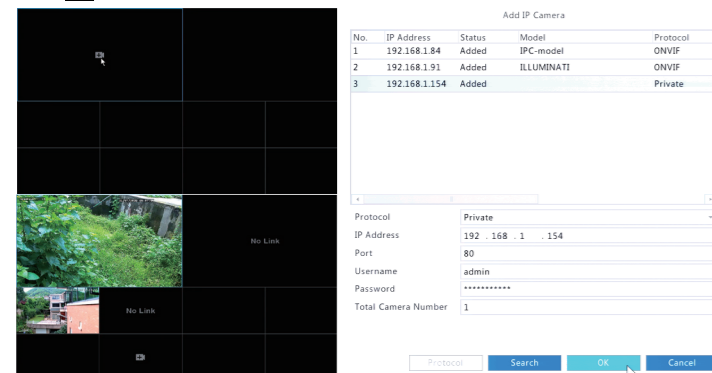
Click Yes to change the password into a strong one, then click OK.

-03-

3.2 Manually Add an IP Device

Make sure the IP camera is on the same LAN network as your NVR.

- Click **+** and all discoverable IP cameras will be listed.



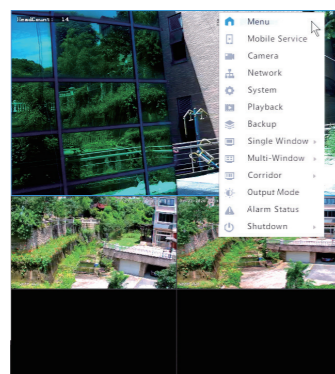
- Click the IP camera you want to add.
- Enter the corresponding username and password, then click OK. For 3rd party IP cameras, please make sure you enter the correct ONVIF port.
- The live video will appear for this channel if all information entered is correct.

4. Recording

4.1 Scheduled Recording

Right click on the screen to open the short-cut menu.

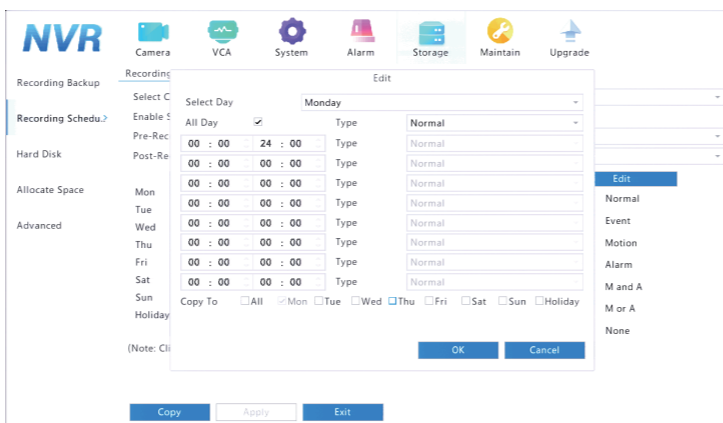
- Click **Menu > Storage > Recording**
- Select the camera from the list. Scheduled recording is enabled by default. If it is disabled, select the checkbox to **enable it**.
- Set **Pre-Record** and **Post-Record** as needed.



-04-



- Click **Edit** and set the recording schedule and type. Review the settings and then click **OK**.



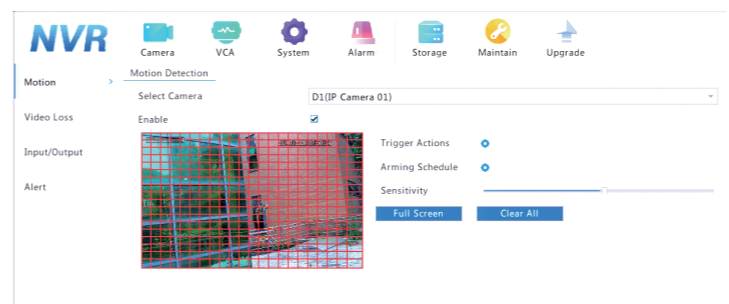
- Click **Apply** to complete the configuration.

-05-



4.2 Motion Detection Recording

- Click **Menu > Alarm > Motion**.
- Select the camera from the list, and then select the check box to enable motion detection.

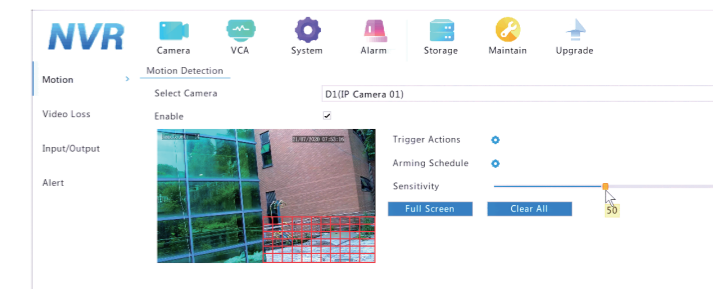


NOTE!

- Motion detection is enabled on the NVR by default. Unless specified, the detection area covers the full screen.
- An alarm icon appears in the upper right corner when motion is detected.

-06-

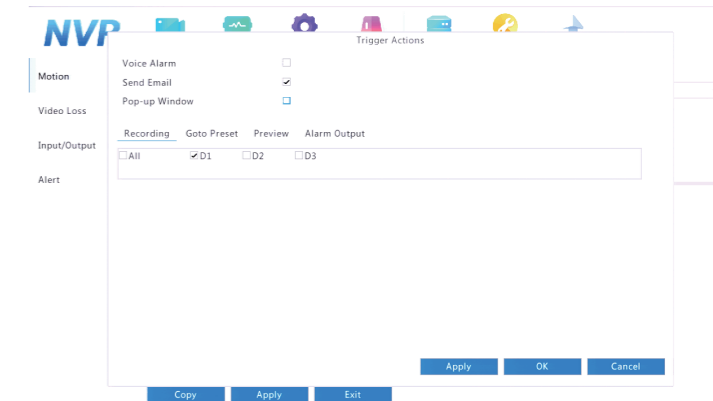
- In the preview window on the left side, click and drag your mouse to specify a motion detection area (red grid). Use the slider to adjust detection sensitivity.



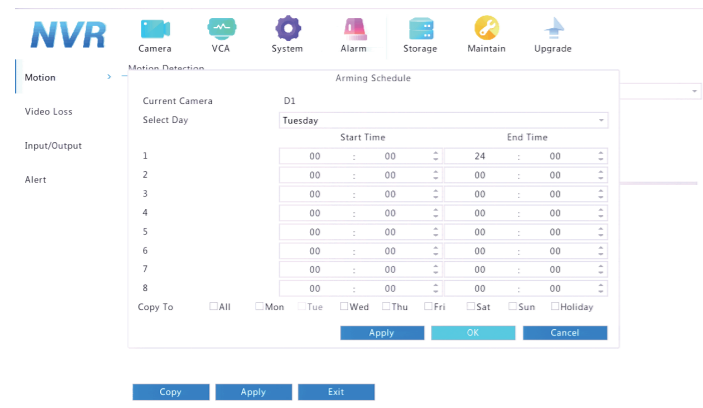
- Configure **motion detection recording**: click **+** icon next to Trigger Actions, click the Recording tab, select the camera, and then click OK.

- Configure an **arming schedule** (time period during which motion alarm will be triggered) and click **+** icon next to Arming Schedule and then set time periods as needed.

- Set a **recording schedule** under Storage > Recording. For detailed steps, please refer to Chapter 4.1 Scheduled Recording. Please make sure the type for recording is set to Motion, and the schedule box shall appear in green.



-07-



5. Playback

5.1 Instant playback

Instant playback plays the video recorded from the last 5 minutes and 60 seconds.

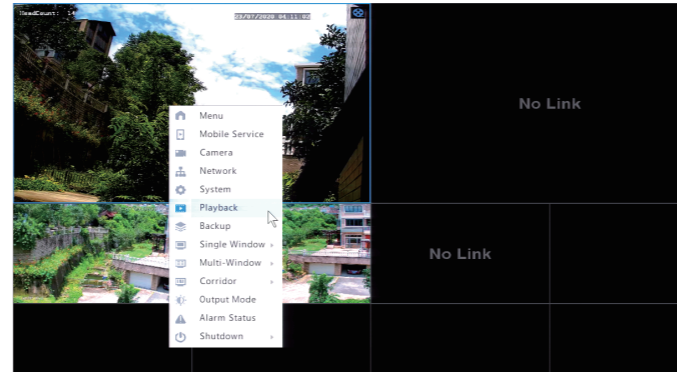
1. Click the desired window, and then click on the toolbar from the preview box to start instant playback.
2. You may drag the slider to control the video. Pause and resume as needed.



-08-

5.2 Normal Playback

Use this method to watch playback by date.
1. Right click the mouse and then choose Playback.

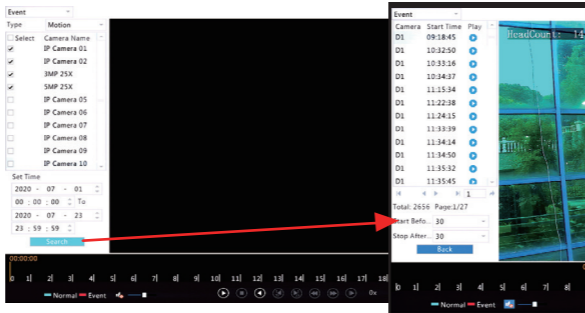


2. Click **Max. Cameras** from the upper right corner to select the maximum number of cameras to playback simultaneously. When you choose more than 1 camera, the cameras will playback in SD view.
3. Select the date on the calendar and then click to start playback.

5.3 Event Playback

Specify an event type and play videos recorded for one or more cameras during a specified time period.

1. Right click the mouse and then choose **Playback**. In the playback window, select **Event** from the drop-down list on the upper left corner.
2. Select the desired event type, for example, motion detection.
3. Select the desired camera, set the time period, and then click **Search**. Click for the desired recording to start playback.



-09-

5.4 Smart Playback

In the smart play mode, the system will analyze the video to obtain smart search results (such as detected actions). If such a result is detected, the progress bar will be highlighted in green.
1. In the playback window, select Smart from the drop-down list on the upper left corner.
2. Click for the desired camera to start smart playback.



6. PTZ, Preset and Patrol

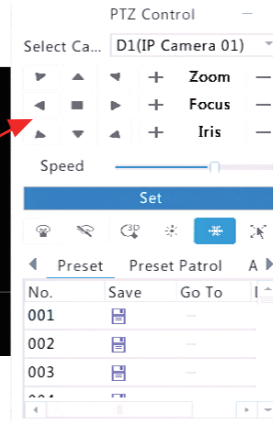
6.1 PTZ

1. Click on the live view window, and then click .



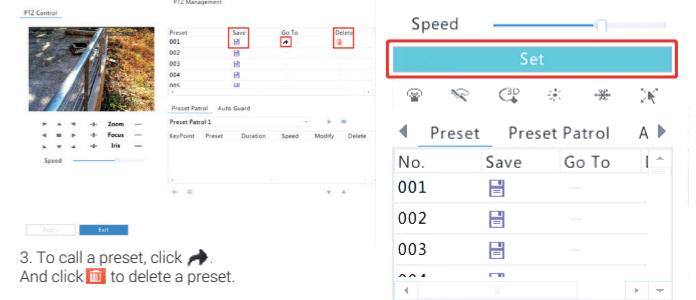
2. Then the PTZ control panel will pop out. Click arrows to control the direction of movement of the camera.

-10-



6.2 Preset

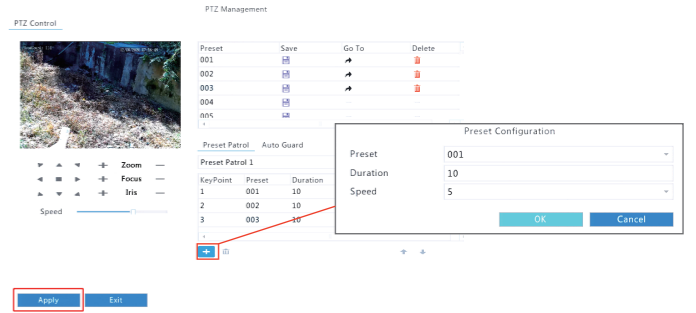
1. A preset is a predefined position. Users can call the preset to quickly go to the desired image position. Click the Set button and the PTZ Management window pops out.
2. Adjust the pan tilt zoom position as needed and then click to save the preset.



3. To call a preset, click . And click to delete a preset.

6.3 Patrol

1. A patrol is a memorized series of preset function. In the PTZ Management window, click .



The preset configuration window pops out. Select a preset from the drop-down list, set the duration (dwell time at specified preset) and the rotation speed (travel speed between presets). Click OK to save the settings.

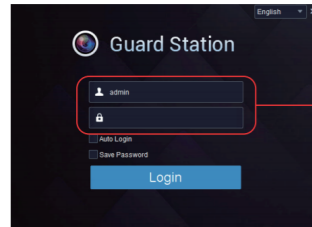
2. Repeat the above steps to add all desired presets, and click **Apply** to save the settings.
3. Click right to the drop-down list to start a patrol. To stop, click .

-11-

7. Desktop Access

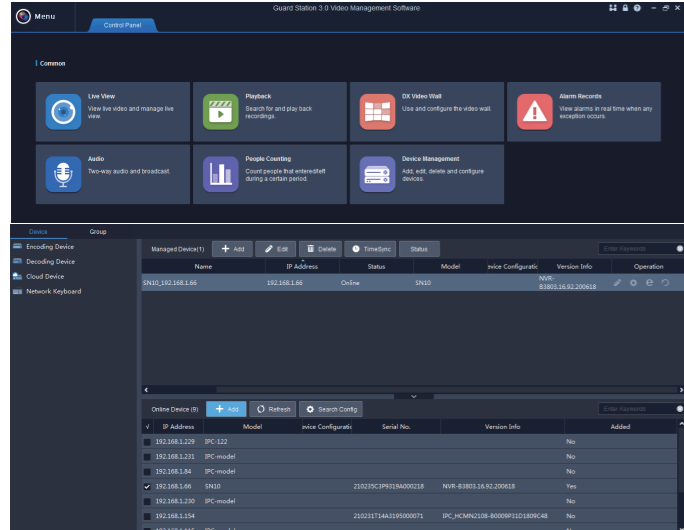
Ensure your PC is connected to the same LAN network as your NVR.

1. Install Guard Station client.



Default username is **admin**
Password is **123456**

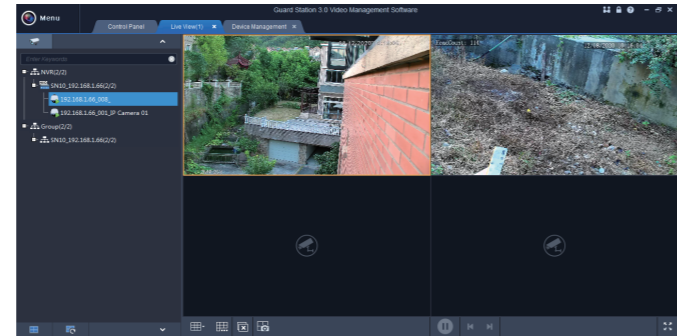
2. Please proceed to the "Device Management" tab to add your NVR to the client software:



3. The NVR should automatically display under "Online Device" on the lower section. Select the NVR, and click "+Add" to add the NVR to the upper section. The camera should show "online" status if it has been successfully connected to the Guard Station client, otherwise please click the pencil icon to modify values to establish a successful connection. The default username is **admin** and password is **123456**.

-12-

4. Please go to the Live View section under Control Panel.
5. Double click the device name on the list to enable live viewing:

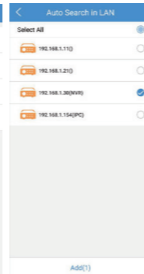
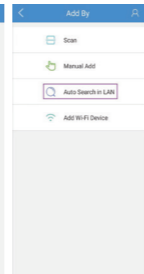
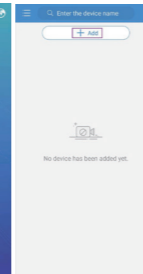
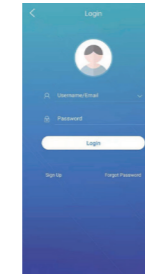


8. Smartphone Access

1. Scan the QR code below to download the **Guard Viewer** App.



2. Sign up a cloud account. Select "international" service zone if asked. (S8.2)
3. Click **+ Add** to add device. (S8.3)
4. You can add device by Auto Search in LAN if your smartphone is connected to the same network as the camera. (S8.4)
5. Select the device that you want to add. (S8.5)



8.2

8.3

8.4

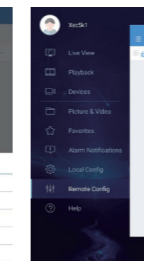
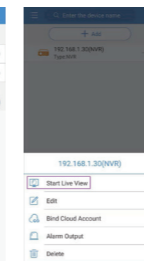
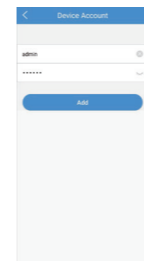
8.5

-13-

Note:

Auto LAN search only works if the http port of the camera remains unchanged (default 80). If the http port has been changed, the camera can only be added manually with its corresponding new port.

6. Enter the username and password of the camera. The default account is **admin/123456**. (S8.6)
7. Go back to the Device list from the side bar, tap the device that was just added and select "Start Live View".
8. Tap to show the sidebar, you can control playback, local config and enable alarms etc.



8.6

8.7

8.8

9. VCA

VCA stands for Video Content Analysis, and it will capture human faces of WeLanc IP cameras and store it to the NVR's VCA photo library. Note, the feature does not support 3rd party IP cameras over ONVIF.

9.1 Face Detection

Face detection is used to detect human faces in a specified surveillance area.

1. Click **Menu > VCA > Face Detection**.
2. Select the camera and then select Full Screen or Specify Area. (If you select Specify Area, please click Draw Area and draw a detection area using the mouse)
3. Adjust detection sensitivity as needed to achieve optimal effects.
4. Click right to Trigger Actions and set action(s) to trigger.
5. Click right to Arming Schedule and then set the time when actions will be triggered.
6. Click Apply to save settings. Then click Start Face Analysis.

9.2 VCA Search

You can search for video clips triggered when human faces are recognized and captured.

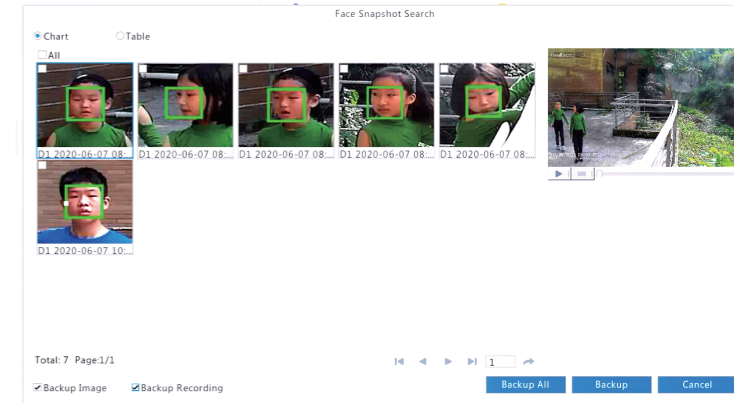
1. Click **Menu > VCA Search > Face Snapshot Search**.
2. Select cameras, set a search period, and then click Search. Search results are displayed.

-14-



3. View search results in a chart or a table format. Back up search results (including images and recordings) as needed. To view videos recorded when the face was detected (around 10 seconds before and after), click the play button.

If you have any questions or concerns, please contact support@welanc.com



-15-